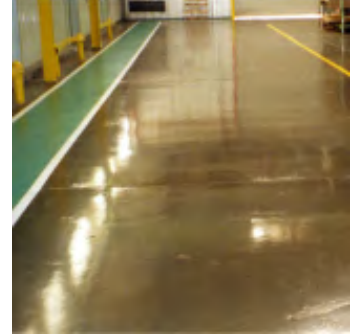


Teknobond 910

MMA Based Primer



CE TS EN 1504 – 2

Product Description MMA based, Air Dry, Transparent, Impregnation, Surface Protection and Primer Resin.

Areas of Usage

- In airports (runway, apron), ports and shipyards,
- In all kinds of industrial fields, workshops and warehouses,
- In urban and non-urban roads, bridges, viaducts, pedestrian paths,
- In shopping malls and hospitals,
- In all historical works (mosque, church, castle, column, temple, sculpture, etc.)
- In prefabricated buildings,
- On surfaces of concrete, natural stone, asphalt.
- It is used as primer before TEKNOBOND 940 application.

Features and Benefits

- MMA based
- It is very long-lasting and durable.
- Its application is very easy.
- It is resistant to atmospheric conditions.
- It is a single component.
- It prevents the powder from being impregnated on the surface.
- Adhesion on the surface is very high.

Application Instructions

Surface Quality: The surfaces must be clean, smooth, solid, free from any antiadhesive substance such as dust, oil, dirt, rust, mold oil, detergent and waste. The concrete floor should not have water accumulation, humidity and humidity. It should be a dry floor and the concrete surface moisture should be below 4%.

Surface Preparation: High pressure water should be prepared by cleaning with suitable mechanical surface preparation techniques such as jetting, vacuum, roughening, sandblasting.

It is mixed in a clean container which is free from all kinds of materials that prevent adhesion or in a low speed mixer in its package until a homogeneous mixture without lumps is obtained. Mixing time should be minimum 5 min.

The prepared mixture should be placed in 5 minutes depending on the air temperature and the amount of water. It is recommended to apply at least 2 coats. If the first layer is impregnated on the surface, the other coats can be applied for about 15 minutes (at 15°C). It is recommended that the application be done from top to bottom.

The amount of consumption given is theoretical and may vary depending on application temperature, type of beaten trowel used, ceramic grade, surface and workmanship. We recommend sample application for consumption control.

Application Notes / Restrictions

- For outdoor applications, the first 1 hours of sunshine should be protected from rain and frost.
- During the application of the product, work clothes suitable for occupational health and safety rules should be worn and appropriate glasses and masks should be used..
- Do not add foreign matter.
- Hands and areas of contact with the skin and hands should be cleaned with water before the product is completely cured and hardened. In case of contact with eyes, wash eyes with warm water and detergent then a doctor should be consulted.
- Immediately after application, before hardened, the equipment should be cleaned with TEKNOTHINNER. After the product is hardened, it should be cleaned by mechanical methods.

Technical Data

General Information	
Appearance	Clear yellow liquid
Shelf Life	12 months in unopened package in dry environment
Package	15 kg tin
Application Information	
Application Temperature	(+10°C) - (+50°C)
Consumption	200 - 300 gr/m ²
Density	1,00±0,02 g/ml
Waiting Time Between Coats	15 min.
Time to Put Into Service	1 Hour
Water Absorption	% 0,005
Temperature Resistance	(-30°C) - (+80°C)
Hazardous Substances (EN 12004)	See the safety data sheet.

Technical data are approximate values obtained from the laboratory study of Tekno Construction Chemicals for finished products obtained at +20°C air temperature and 50% relative air humidity.