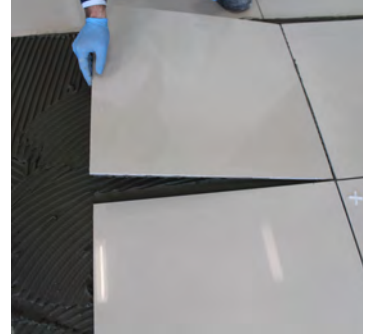


Teknofay Superflex

Flexible and High Performance
Ceramic and Granite Adhesive



TS EN 12004 C2TE S2

Public Pos. No: 10.300.2205

Product Description Cement based, high performance, very flexible adhesive with reduced slip and extended open time for large-sized ceramic, granites, porcelain ceramics and natural stones.

Areas of Usage

- Exterior bonding of all types ceramic granite or porcelain ceramics sized 40x40 cm up to 30 meter and 60x60 cm up to 15 meter height
- Bonding of tiles on places subject to heavy traffic like shopping malls, hospitals and schools.
- In the adhesion of ceramics, natural/composed Stones, travertine, granites, cottos, press bricks, porcelains, ceramics, marbles, and to all kinds of surfaces (like cement based surfaces, concrete, precast concrete components, plasters, etc.) in inner and outer areas for vertical and horizontal applications.
- In wet volumes like swimming pools, bathrooms, water tanks, etc.
- In underfloor heating surfaces, heated pools, thermal pools, swimming pools.
- In the wall and floor tiles of cold storage houses.

Features and Benefits

- Perfect adhesion performance,
- It is resistant against tensions and vibrations rooting from temperature differences.
- Resistant to all kinds of climatic conditions.
- No sliding in vertical applications.
- Easy to prepare.
- Long operating time
- Very good workability
- High flexibility.

Application Instructions

Application surface has to be clean, strong, dry and free from all kind of substances that prevent adhesion. Disordered surface must be repaired with TEKNOREP repair mortar.

Surface must be moisturized before the application.

Necessary amount of water is poured into a clean mixing container. 25 kg TEKNOFAY SUPERFLEX is slowly added to the water and mixed with a 400 - 600 RPM low speed mixer until a homogenous mixture is obtained. Leave to mature around 5-10 min, while all additives are completely dissolved and then stir it again for 1-2 min. In 30 minutes, ceramics, tiles or granites should be applied by pressing them. This period may be shortened in applications made in unsuitable ambient conditions such as high temperature, low humidity and wind. Bonding process should not be done on the expired mortar. The mortar must be scraped off the surface. Large size ceramics/tiles, granites or the coating materials should be bonded in the horizontal direction. Until the first row gets its strength, you shouldn't pass to an upper row.

The expired or crusted mortar in the container should be discarded.

After application, hands must be washed with plenty of water and soap. All the tools and equipment must be cleaned by water after application. After TEKNOFAY SUPERFLEX is hardened, it can only be removed from the surface mechanically.

Health and Safety Precautions: TEKNOFAY SUPERFLEX contains cement and may cause allergic reactions. Work in well-ventilated rooms or outdoors. Avoid contact with eyes and skin. Must be stored away from children.

Please look at the Material Safety Data Sheet for detailed information.

Storage Conditions: Must be stored in unopened original packing, and in cool and dry environment protected from freezing. Keep away from moisture.

Application Notes / Restrictions

The product may be irritating to the skin. Work clothes, protective gloves, masks and glasses must be used.

- A protective cream can also be applied before starting. In case of mortar contact with eyes, eyes should be washed immediately with warm water and consult a doctor.
- It must be protected under ambient conditions below (+) 5°C, the product should be covered with nylon or exposed to freezing by spreading heat insulation plates.
- It must be protected at temperatures above (+) 35°C, covered with nylon or heat insulation plates should be laid out to prevent the product from being exposed to sudden water loss.
- At least 24 hours after the application of Teknofay Superflex, the joint filling should be started.
- Do not add strange material.
- It must be protected after application against adverse weather conditions such as direct sunlight, high air temperature (above + 35°C), rain and frost. Teknofay Superflex should be cleaned with water without getting hard and hard. Immediately after application, hands and face should be washed thoroughly with soap and warm water.
- Immediately after applying the equipment, the mortar should be washed with water without hardening.
- Combined methods should be preferred in applications where there is intense pedestrian and load traffic or where heat changes are high.

Technical Data

General Information	
Appearance/Color	Gray Powder
Shelf Life	12 months
Package	25 kg Kraft bag
Application Information	
Application Temperature	(+5°C) - (+35°C)
Mixture Ratio	5,5-6,0 lt water / 25 kg powder
Pot Life	3 hours
Service Temperature	(-20°C) - (+70°C)
Slip (EN 1308)	≤ 0.5 mm
Pedestrian Traffic Opening Time	1 day on the floor and 8 hours on the wall
Performance Information	
Open Time (EN 1346)	≥ 0.5 N/mm ² after 30 min
Tensile Adhesion Strength (EN 1348)	
After Dry Storage	≥ 1.0 N/mm ²
After Wet Storage	≥ 1.0 N/mm ²
After Heat Storage	≥ 1.0 N/mm ²
After Freeze - Thaw Cycles	≥ 1.0 N/mm ²
Flexibility	≥ 5 mm – S2 Very Flexible
Fire Reaction Class (TS EN 13501-1)	A2

Technical data are approximate values obtained from the laboratory study of Tekno Construction Chemicals for finished products obtained at +20°C air temperature and 50% relative air humidity and valid for its performance after 28 days.

Consumption Table	
TEKNOFAY SUPERFLEX	1m ² Powder Consumption (kg)
25 kg Kraft bag	4-5